

The Future: Land use, climate change and ecosystem services Oceania Ecosystem Services Forum

Anita Wreford
AERU, Lincoln University

5th September 2019



LINCOLN
UNIVERSITY
TE WHARE WĀNAKA O AORAKI



C

An
sus
terr

NEW ZEALAND / COUNTRY

New Zealand meat production systems 'part of the solution' for climate change - NZ Beef + Lamb

3:02 pm on 7 August 2019



No reason for 'carbon guilt' over NZ meat, milk, says Fed Farmers

05/08/2019 | Aggie Stewart

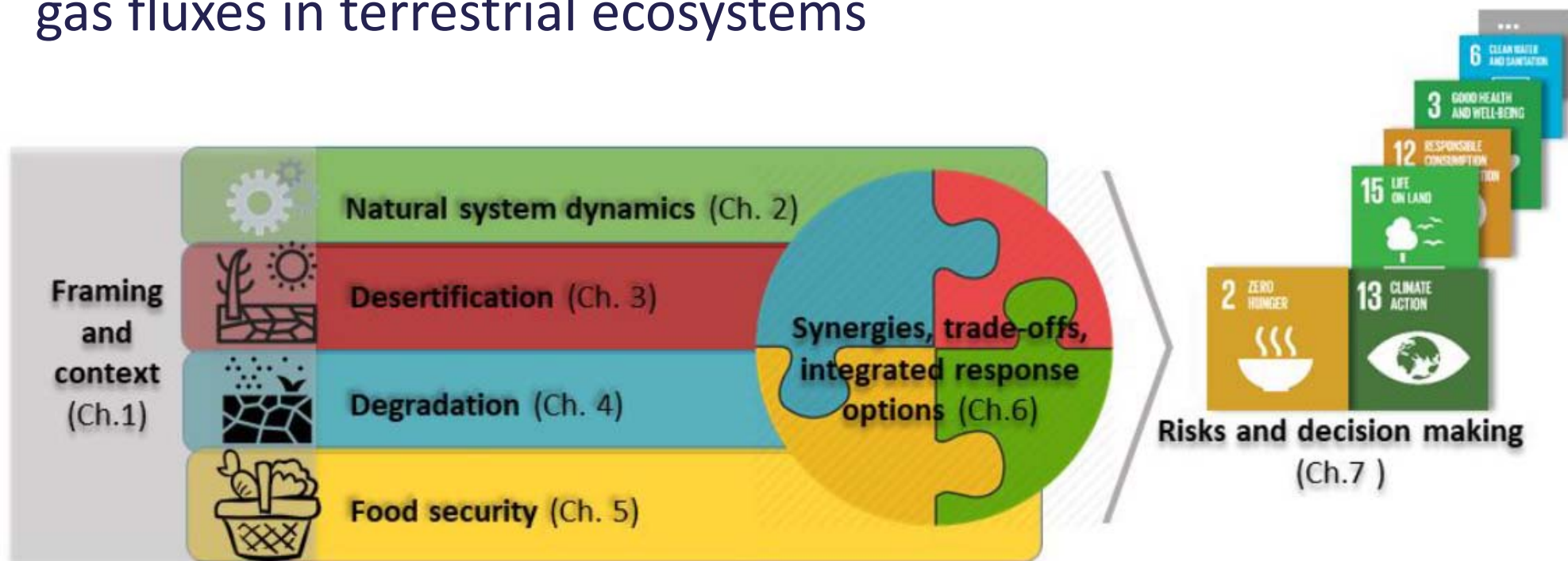


Eat plants to help the climate, IPCC report suggests

05:26, Aug 09 2019



Climate change and desertification, land degradation, sustainable land management, food security, greenhouse gas fluxes in terrestrial ecosystems



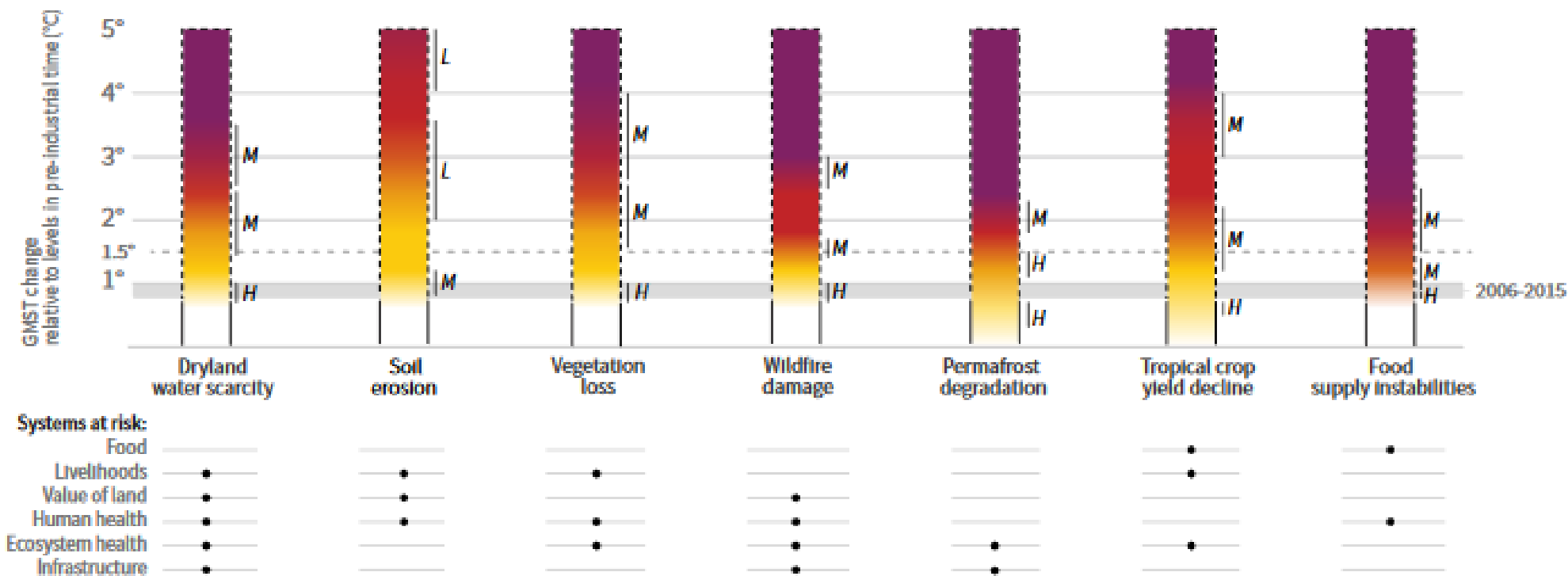
Key messages

- Land provides the principal basis for human livelihoods and wellbeing including the supply of food, freshwater and multiple other ecosystem services, as well as biodiversity.
- Land provides the basis for many ecosystem functions and services, including cultural and regulating services, that are essential for humanity
- Land is already under pressure
- Climate change is making a challenging situation worse and undermining food security



Risks to humans and ecosystems from changes in land-based processes as a result of climate change

(Fig 2, Summary for Policy Makers <https://www.ipcc.ch/srccl-report-download-page/>)



Climate Change and Land.
You asked for this report, what
will you do with it?

(Reisinger, 2019)



Policies and Governance are critical

“Many policies
That improve the land are good
For climate, too

Incentives, tools, rules:
Things don't happen by themselves.
Change needs policies

...

Joined up solutions
Exist but we don't use them:
Need joined up actors”

(Reisinger, 2019)



Climate Change Response (Zero Carbon) Amendment Bill:
Summary



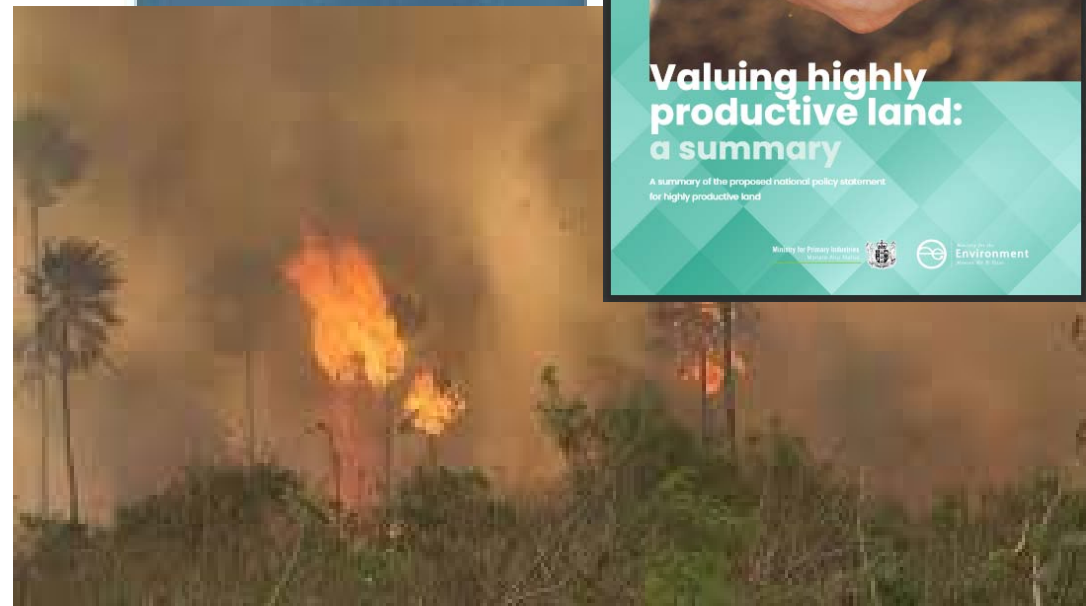
**Valuing highly
productive land:
a summary**

A summary of the proposed national policy statement
for highly productive land

Ministry for Primary Industries



Department of Environment

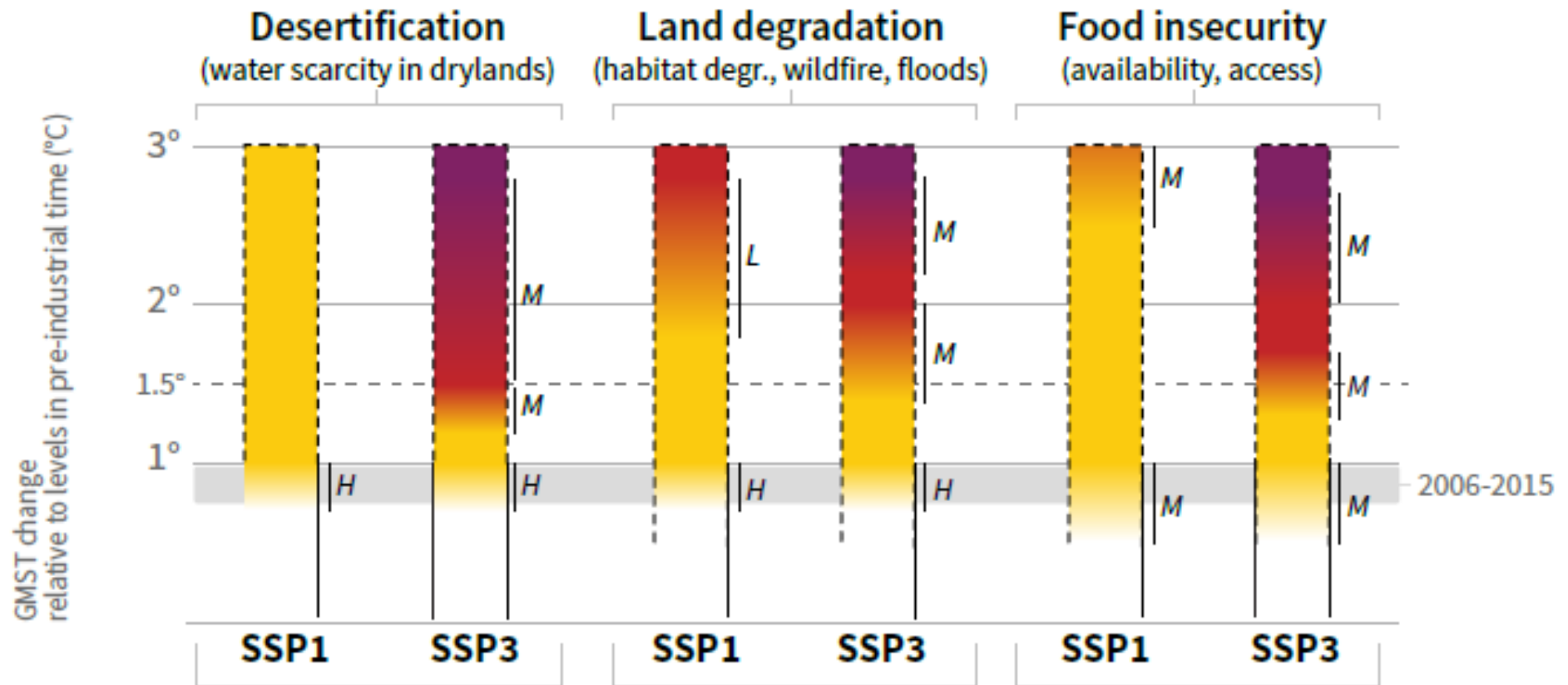


- Choice and implementation of policy instruments determine future climate and land pathways

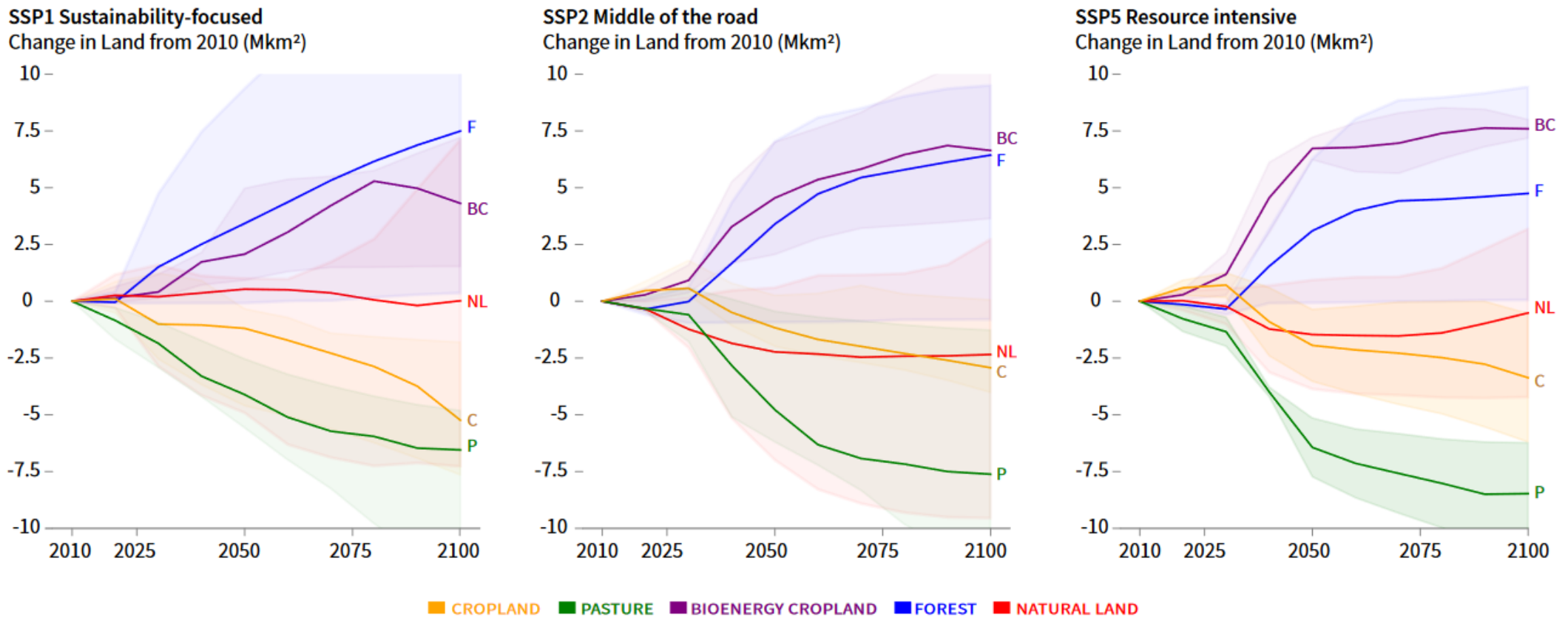


Different socio-economic pathways affect levels of climate related risk

(Fig 2, Summary for Policy Makers <https://www.ipcc.ch/srccl-report-download-page/>)



Pathways linking socioeconomic development, mitigation responses and land (SPM Fig 4A)

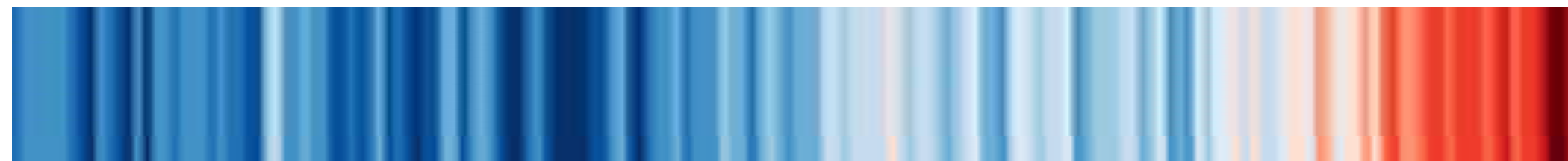


“Land cannot do it
On its own. Needs action on
Every front to work”



Thank you!

anita.wreford@lincoln.ac.nz





LINCOLN

UNIVERSITY

TE WHARE WĀNAKA O AORAKI

Indicative example of transitions

